

ONCO ENSINO



Onco Ensino
educação a distância



100% de esforço onde houver 1% de chance.

www.oncoensino.org

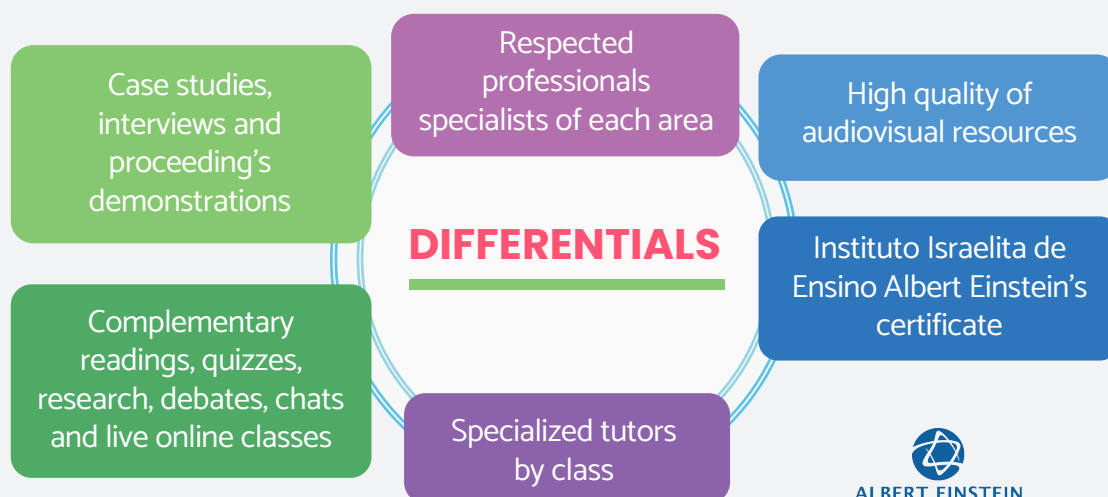
“Onco Ensino” is an oncology distance learning program that aims to update **doctors** and other **health professionals** around Brazil.



Online professional upgrading to the health team

Capacitation + updating (through an interdisciplinary model)

= **prevention, early diagnosis and better conclusions**



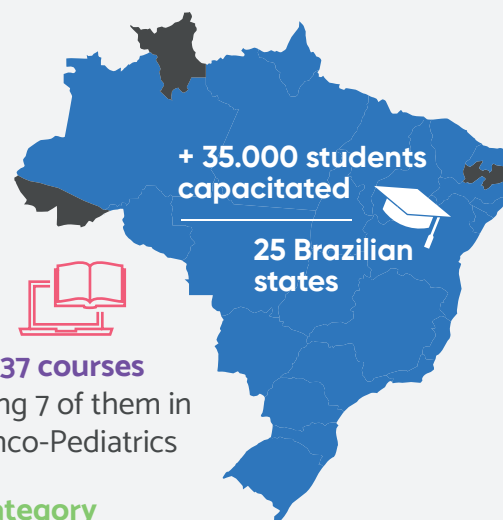

ALBERT EINSTEIN
INSTITUTO ISRAELITA DE
ENSINO E PESQUISA

Project covering: more than **35.000** students capacitated since 2018, and more than **280 health institutions** in **25 Brazilian states**.

Performance: conclusion rate of **72,6%**.

Free courses: all courses are offered free of charge and the vacancies are filled by means of agreement with health establishment, prioritizing SUS institutions.

Workload: **12 hours on average** per course.



Courses carried out by professional category

16.060 nurses	3.444 doctors	3.390 physiotherapists	2.882 psychologists	2.441 nutritionists	2.024 social workers	777 dentists	725 occupational therapists
------------------	------------------	---------------------------	------------------------	------------------------	-------------------------	-----------------	--------------------------------

CONTENT FOR HEALTH PROFESSIONALS

Doctors

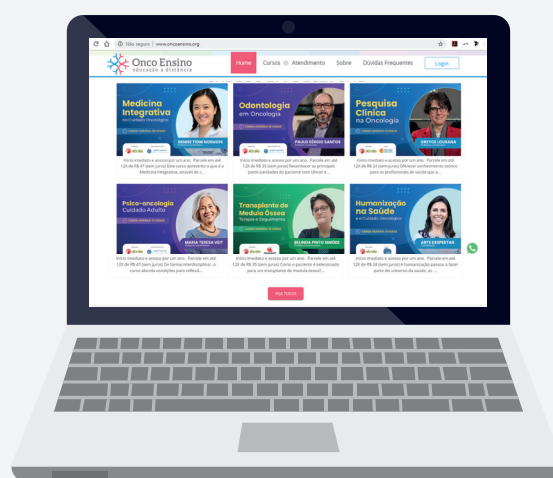
- Childhood Cancer Diagnosis in Pediatrics
- Childhood Cancer Therapies in Pediatric Oncology
- Blood Cancers Diagnosis and Care in Primary Care
- Breast Cancer 2 Re-signifying Concepts from Diagnosis to Therapy
- Prostate Cancer Diagnosis and Therapeutic References
- Blood Cancers Onco-hematological Diagnosis
- Diagnosis of Solid Tumors in Adults
- Female Fertility in Oncology
- Male Fertility in Oncology
- Hodgkin's Lymphoma Diagnosis and Therapeutic References
- Thalassemia Diagnosis and Therapeutic References
- Transfusion of Blood Components in Oncology
- Bone Marrow Transplant Therapy and Follow-up
- Surgical Treatment in Oncology - Overview
- Therapeutic Solid Tumors, Follow-up and Updates

Other health professionals

- Pediatric Oncology Nursing
- Physiotherapy in Pediatric Oncology
- Nutrition in Pediatric Oncology
- Psycho-oncology Pediatric Care
- Oncology Nursing
- Pharmacy in Oncohematology
- Physiotherapy in Oncology
- Nutrition in Oncology
- Dentistry in Oncology
- Psycho-oncology Adult care
- Social Work in Oncology
- Occupational Therapy in Oncology

Multi-professionals (both public)

- Palliative Care in Pediatric Oncology
- Breast Cancer - Updating Knowledge in Primary Care
- Palliative Care in Oncology
- Caring for Those Who Care 5. Oncology Professionals
- Humanization in Health and Cancer Care
- Integrative Medicine in Cancer Care
- Clinical Research in Oncology
- Biosimilar Medicines Concept, Application and Safety
- Prevention in Oncology
- Dodói Team Training Project



Apoio Institucional

PRONON
Programa Nacional de Apoio à Atenção Oncológica



Ministério da Saúde



www.abrale.org.br | abrale@abrale.org.br | 0800 773 9973 | (11) 3149 5190
Dr. Fernandes Coelho street, 64 - Pinheiros, São Paulo - SP, 05423-040